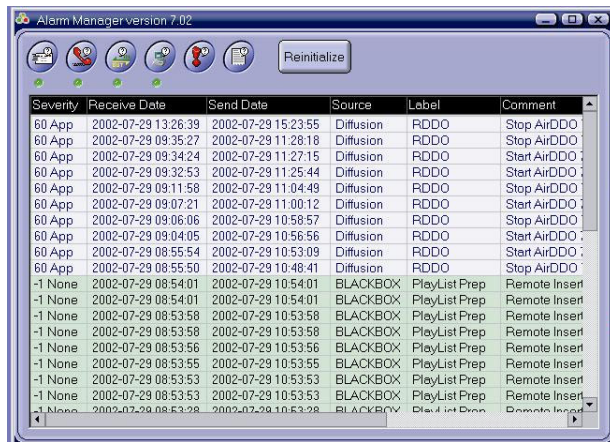


Alarm Manager : A solution to supervise applications.



Audio and Video solutions getting more and more specific with a significant number of workstations, it becomes very difficult to manage and supervise the hardware and software fleet. Netia provides an automated solution to know if any workstation or software is suffering.

Centralising alarms :

Production and Broadcast applications (Radio Assist) and backoffice such as the Purge send their alarms and notifications to Service logger. The purpose of this service is to centralise and format a file with received data. These data are broadcasted from the clients on the TCP/IP network in unicast, multicast or broadcast.

A reliable process :

Alarm Manager reads data written by service logger. This solution brings flexibility. Applications don't expect any acknowledgment from the receiver, this is performed by the TCP/IP service. Service logger has a very low rate level error even when the network is heavily loaded. Alarm reads received alarms and triggers actions defined in the setup.

Several level of severity :

There are 7 levels :

- Broadcast items
- Program decision
- User action
- Debug mode
- ALARM
- ERROR
- WARNING

Several possible actions :

Alarm Manager reacts on 3 distinct severity levels :

- WARNING
- ERROR
- ALARM

And according to one of the following severity, it can :

- Send an email
- Page a number or read a prerecorded message
- Trigger one or several relays.

Alarm Manager can also detect the absence of a workstation in a network. If there is no response from a workstation, a severity level is defined. Each workstation can have a different severity level. Example : A server can trigger an ALARM type level while an edit workstation will trigger a WARNING.

A soft and complete setting : It's also possible to combine several events. Example : On a WARNING, Alarm Manager sends an email. On an ERROR, page a number and reads and audio message. On an ALARM sends an email and trigger a relay.

It's also possible to filter on other severity levels that don't need an urgent action. The display is done on broadcasted items, on user actions and on the applications (Automatic log off, etc.)